

A project initiative of the Victorian dairy industry proudly sponsored by the Gardiner Dairy Foundation in partnership with Monash University

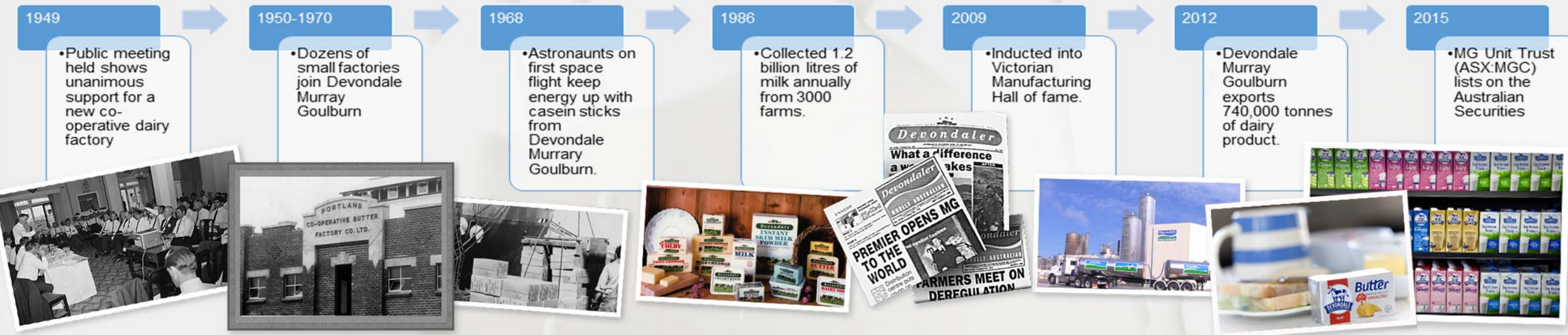
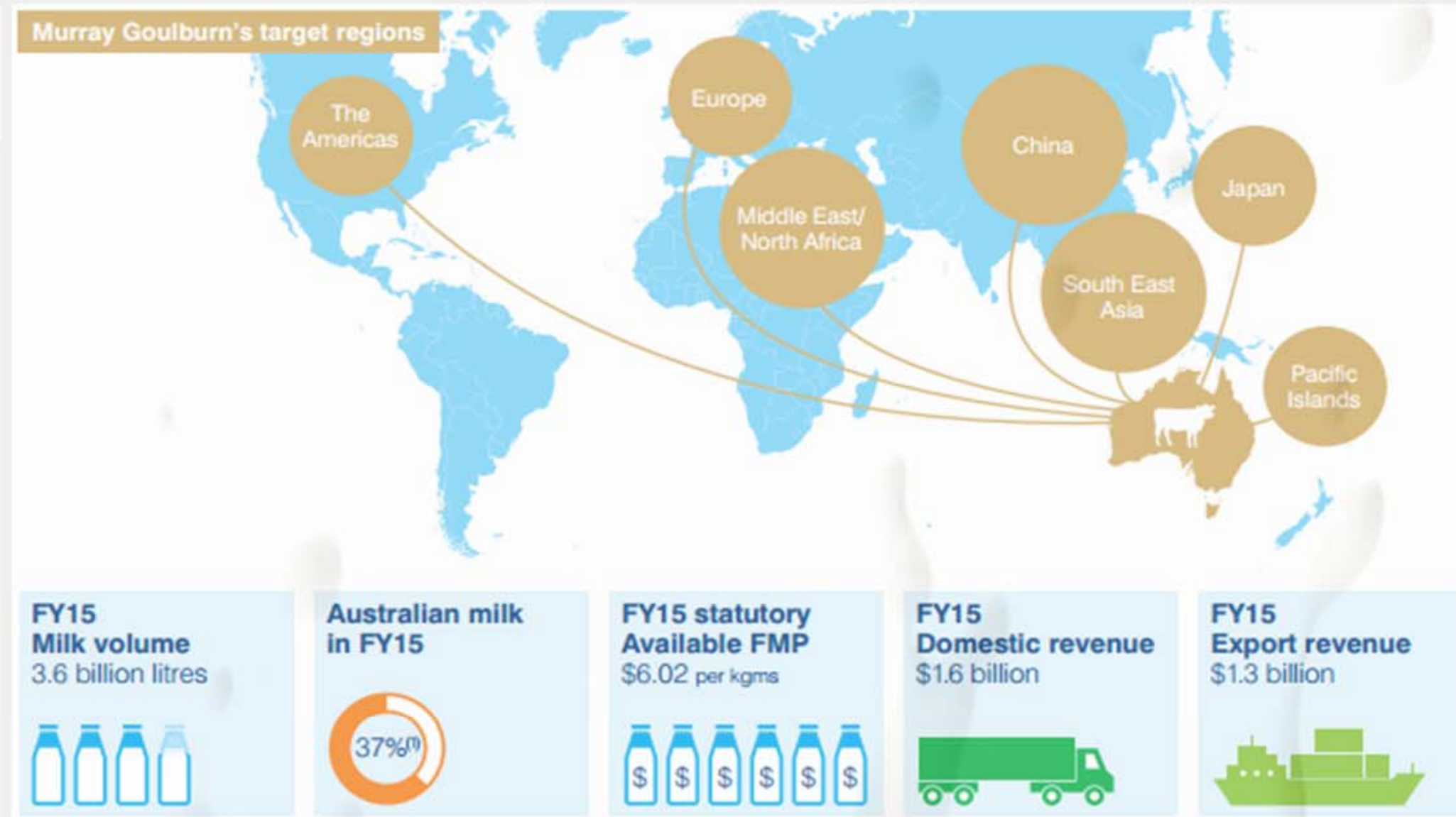
# Monash Industry Team Initiative (MITI) 2015-2016

## Maximising Product Stream Value

Conor Rogers (BChemEng), Jade Lin (BCom/BMechatronicsEng), Michael (Huu-Binh) Lam (BCom/BChemEng), Warren Beere (BPharmSc/BChemEng)

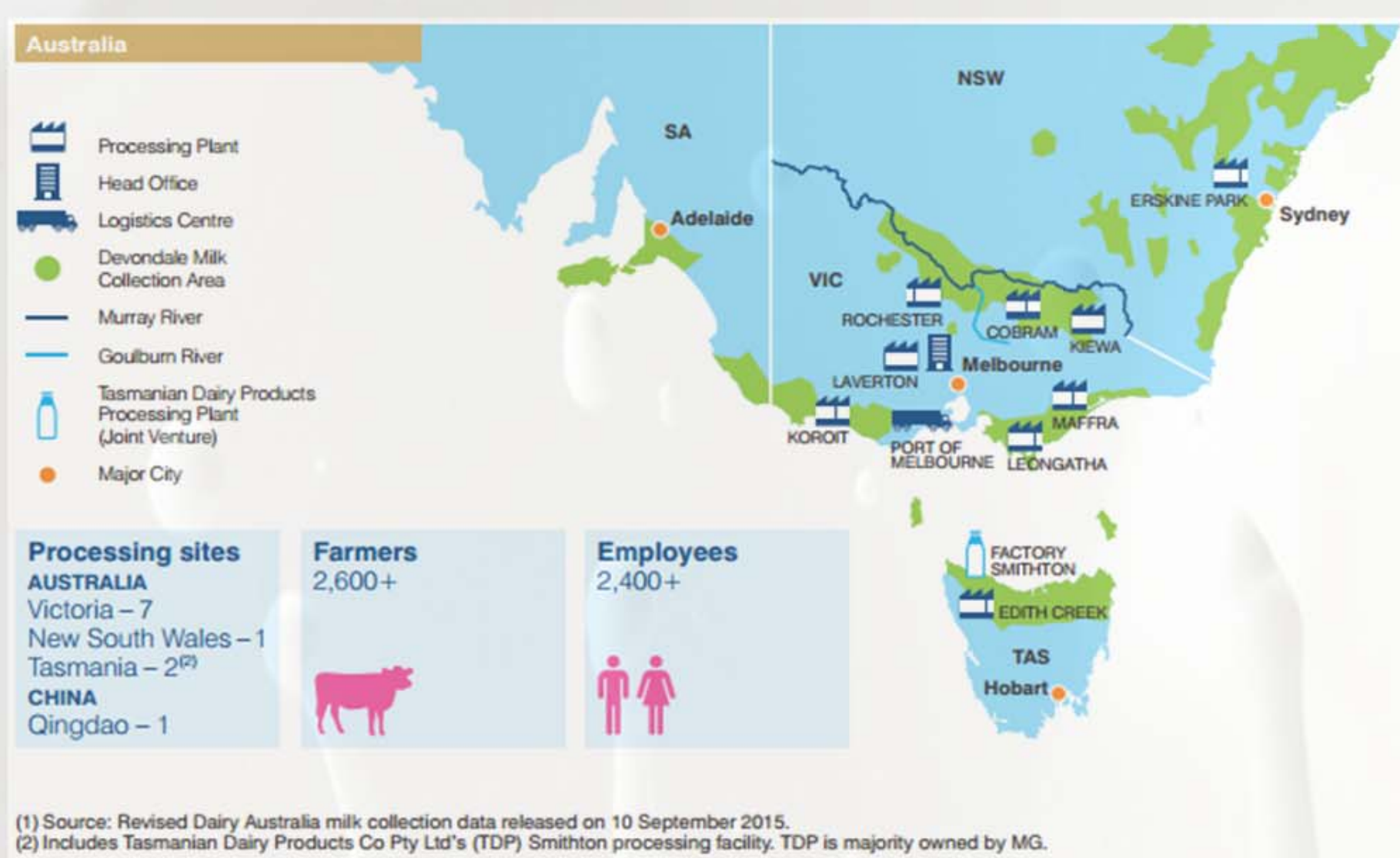
### Devondale Murray Goulburn

Devondale Murray Goulburn is Australia's largest dairy food company, a co-operative established more than 60 years ago by a group of Victorian dairy farmers seeking a better deal for their milk, and are today the primary partner of Australian farmers. With a focus on safety, quality and sustainability, Devondale Murray Goulburn produces a balanced portfolio of dairy products sold in Australia and across the world. This includes high quality dairy ingredients, including speciality milk fats and bioactives, retail brands, including Devondale and Ascend, and food service products for cafes, restaurants and more.



### Project scope

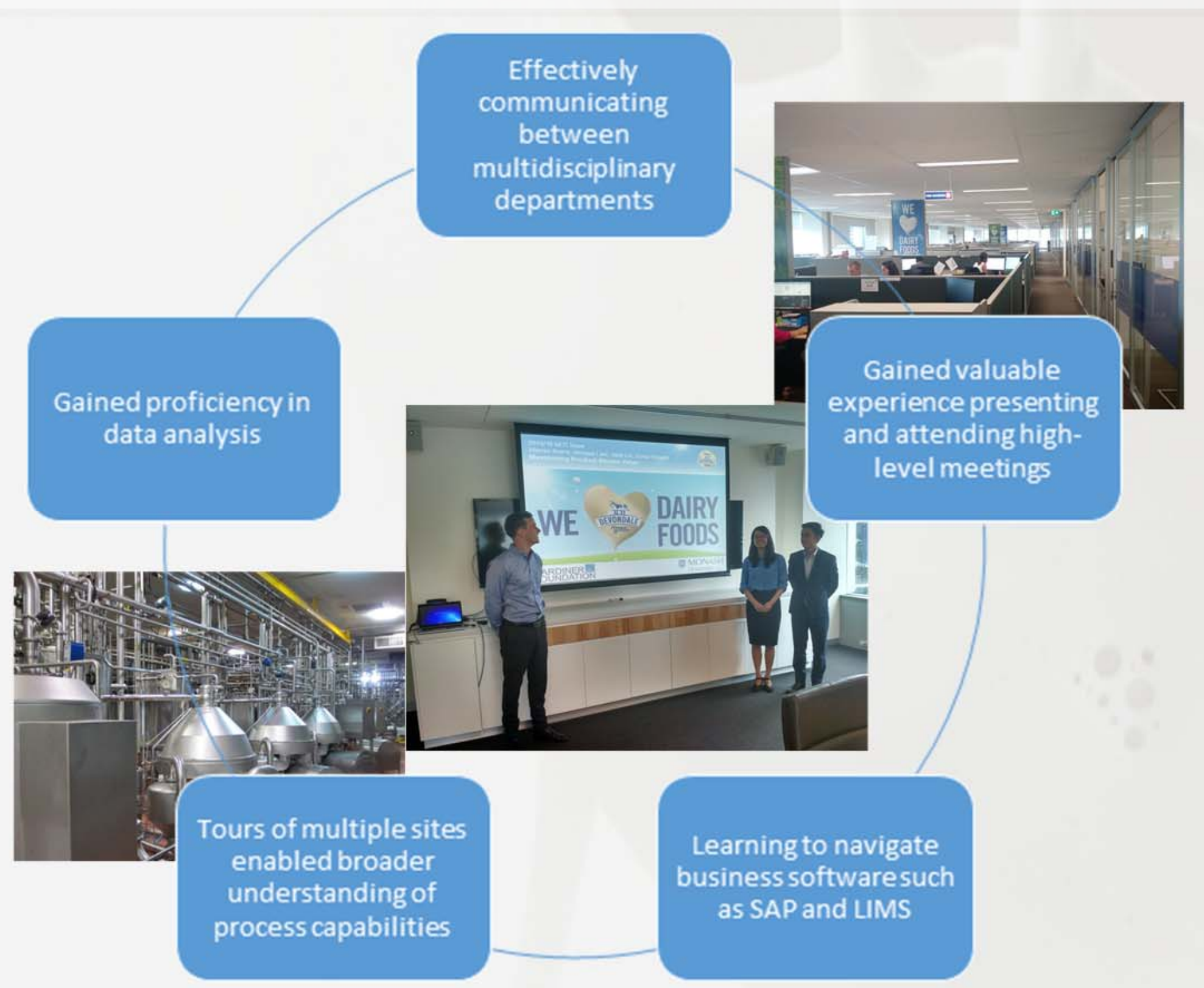
Applying techniques to identify opportunities which will enable consistent achievement of the highest possible quality of finished product, which meet our customers expectations. This project will require analysis of current specifications, production capabilities and raw material variability to deliver recommendations about optimal finished product mix, capital requirements and business process rules to enable consistent delivery of maximum stream value.



### Outcomes

- Compile site product lists for the last financial year and year to date
- Create an interactive tool that can be utilised by the business in order to review product history trends and accurately forecast financials.
- Use the tool to evaluate process capability of equipment for particular specs.
- Successfully provided product composition recommendations based on statistical data analysis to improve productivity.
- Assisted in compiling and assessing site data for use in the 2016/17 budget.

### Learnings and discoveries



### Working at Devondale Murray Goulburn

- Variety in work with different departments and levels of management
- Observe corporate decision-making
- Opportunity to visit manufacturing sites in rural Victoria
- Friendly and engaging staff culture
- Gaining invaluable network connections
- Presenting and attending high-level meetings

“Working at Murray Goulburn proved to be a challenging yet rewarding experience. The opportunity to work collaboratively between departments was invaluable and gave me real insight as to how a business operates on a national level.” - Warren Beere

“There wasn't a day where I didn't enjoy coming to work at Devondale. I had so many opportunities to learn more about the business and to speak to people with diverse backgrounds and experiences.” - Michael Lam

“You feel at home right away at Murray Goulburn – the staff are friendly and engaged, and the work space is comfortable and well-equipped.” - Jade Lin

“More than anything, I enjoyed the atmosphere at Devondale. There is a general feeling that the future is bright and the people here are motivated to bring it about.” - Conor Rogers